

Inside the City of Ann Arbor's new **RECYCLEPLUS** PROGRAM

PAPER & FIBERS

NEW! Now papers can be mixed together — **newspapers, magazines, catalogs, mixed office paper, junk mail,** and **paper bags** no longer need to be bagged. Envelopes with gummed labels and plastic windows are acceptable as well as "sticky notes" and crayon-marked paper. (The labels, crayon marks and glues float to the top of the water and are skimmed off during the paper fiber re-pulping process. The labels are not recyclable, but they no longer create problems for paper recycling.) Please cover papers at the curb to prevent blowing and to protect from rain. *No plastic envelopes, such as "tyvek" — if you can't tear it, don't recycle it. No plastic or metal binders, clips or tags. Remember to remove the boxboard backs of notebooks and recycle separately, as described below.*



NEW! **Paperback books** have been added to phonebooks and are collected all year. *No hardcover books.*

NEW! Textiles, including paired shoes and socks, linens and clothing should be placed in a sealed plastic bag. Clear or transparent plastic bags work best. If a dark plastic bag is used, it must be clearly labeled "Textiles" on the outside, otherwise the bag may be easily mistaken as refuse and not collected as a recyclable. The labeled plastic bags may be placed in or outside of the tan "Newspaper" recycling bin. The textiles are shipped to another location for sorting into reusable clothing and linens and material to be recycled into such products as car insulation and carpet padding.

NEW! Also known as "grayboard," **boxboard** was formerly taken only at the Drop-Off Station. Now residents can recycle this material from home. Boxboard tends to be made of very short paper fibers suspended in a glue base, similar in concept to "chip board" used in construction. Boxboard can contaminate other paper types during recycling and should be kept separate.



CONTAINERS

NEW Plastic recycling is now as easy as 1-2-3. Plastic bottles #1 (PET or PETE) and #3 (PVC) have been added to the current #2 (HDPE) bottles for recycling. When choosing and using plastic bottles, look for the number on the bottom inside a triangle. If there is a number 1, 2 or 3 listed on a bottle, jug or jar, then this container, when empty and rinsed, can be placed in the green Containers recycling bin. Notice that only "bottles, jugs and jars" are mentioned for recycling. Plastic tubs (such as are used for margarine and yogurt) and plastic bags may be numbered 1, 2 or 3, but are made of another type of plastic and are not recyclable at this time. Types of containers that are made of #1, 2 and 3 plastics include milk and laundry jugs, water bottles, pop bottles (but return these for the Michigan bottle deposit!), shampoo, salad dressing, peanut butter, liquor, cleansers, etc. *No motor oil bottles or other bottles that have held a toxic substance.*



NEW! **Ceramics** includes clean, broken dishes, terra cotta flower pots, pyrex, and drinking glass. *No light bulbs. No plastic dishware, flower pots, styrofoam cups or packing peanuts.*

NEW! **Empty aerosols.** Please leave on the lids to help reduce any possible spills. Call the County Home Toxics program, 971-7356, for the proper disposal of unused toxic aerosols.

NEW! Metal can collection has expanded to include household **scrap metal**, such as pots and pans, metal pipes and other items up to 1 cubic foot, weighing up to 20 pounds. Electrical appliances are not recyclable.

NEW! **Milk cartons** and "aseptic or tetra pak" juice boxes. The new MRF operator has developed a unique recycling market for these specialized items. Please continue to discard other waxed food boxes or ice cream boxes because they will contaminate the recyclability of milk cartons (and will contaminate boxboard, too).

A Word About Toxic Materials and Waste Reduction

To avoid hazardous waste spills and accidents, household batteries, motor oil and oil filters are only collected along curbside collection routes and at the Recycling Drop-Off Station. Do not place these materials next to recycling carts or by dumpsters.



Remember to Reduce, Reuse, then Recycle. Please continue to support your favorite reuse centers, such as local charities, used book outlets and resale stores with your usable textiles, paperback books, pots and pans. Let the recycling program take the clean materials that are left over.



To help launch the new RecyclePlus program, several voluntary distribution methods will be used for this brochure. Some residents *may* receive more than one copy of this information. Please share or recycle it.

CITY OF ANN ARBOR RECYCLEPLUS



EASIER! FASTER! GREENER! BETTER!

NEW!

Now you can recycle ceramic dishes and more plastic bottle types, as well as aerosol cans, household scrap metal, milk cartons and juice boxes.

PAPER

Place these loose products in the tan "Newspaper" recycling bin.

NEWSPAPER
Includes all inserts.

MAGAZINES
Includes all glossy, newsprint and mixed paper magazines, catalogs and advertisements. Staples and glue bindings are fine.

MIXED PAPER & "JUNK MAIL"
Includes stationery, copier paper, loose-leaf filler paper, computer paper, file folders, blueprints and paper envelopes with plastic labels and "windows." Crayon-marks are fine. **No treated papers such as thermal fax paper or carbon paper.** No plastic envelopes, such as Tyvek. No tissue products such as paper napkins or cups. No metal or plastic binders, clips or tags.

PHONEBOOKS & PAPERBACK BOOKS
No hardcover books.

BROWN PAPER BAGS
No plastic bags.

CORRUGATED CARDBOARD
Please empty and flatten rippled boxes, such as pizza boxes. If large, cut or fold up to 3x2 feet. Place in bin or tie/tape and set next to the recycling bins. Staples and tape are fine. **No waxed cardboard or loose boxboard.**

BAGGED
Bag the following materials separately and place in or outside of the recycling bins.

TEXTILES
Place clean, used textiles into a plastic bag, tie shut and mark "Textiles." Includes clean, dry synthetic and natural fibers such as clothing, bed linens, drapes, towels, shoes and socks (in pairs only). Torn and damaged textiles are o.k. **No nylons or stuffed animals. No non-shoe leather/plastic goods such as handbags or belts. No oily or dirty "rags."**

BOXBOARD
Place inside a brown paper bag or boxboard box and tie or tape shut. Includes non-corrugated grayboard, cereal, tissue and shoe boxes, canned beverage cases, backs of note paper pads, paper towel rolls and paper egg cartons. **No freezer food boxes.**

CONTAINERS

Place these empty, rinsed items in the green "Containers" recycling bin.

GLASS & CERAMICS
Includes clear and colored glass bottles, jars, drinking glass, pyrex, mugs, plates, flower pots. **No light bulbs.**

PLASTIC BOTTLES #1, #2, #3
Includes bottle-and screw-top jar shapes only, marked 1, 2 or 3 (PETE, HDPE and PVC), such as milk jugs and bottles used for laundry, cleansers, cooking oil and water. Remove and discard plastic lids. **No tubs, such as used for margarine. No container that held a toxic material, such as motor oil. No styrofoam cups, packing peanuts, plastic bags, PVC pipes or any other plastic.**

CANS, AEROSOLS, & SCRAP METAL
Includes metal cans, foil, pie tins, metal jar lids and empty aerosols (please leave the lids on empty aerosols, only). Also includes residential scrap metal, such as pots and pans, utensils, metal pipes, coat hangers, and other items up to 1 cubic foot, weighing up to 20 pounds. Teflon coating & non-metallic handles are fine. **No electrical appliances.**

MILK CARTONS & JUICE BOXES
Includes empty juice cartons. **No freezer food boxes. No straws.**

TOXIC MATERIALS

Keep the following materials separate and place outside of the curbside recycling bins or take to the Recycling Drop-Off Station.

BATTERIES

Place used household batteries in a clear plastic bag. Vehicle batteries are accepted only at the Drop-off station. **No appliances.**

MOTOR OIL

Place used crankcase oil only in plastic milk jugs with a screw top or taped lid. Will accept up to 3 gallons/week. **No other liquids mixed with the oil including transmission fluid, antifreeze or gasoline.**

Oil Filters

Drain used oil filters for 24 hours and store filter in a sturdy, clean plastic bag. Will accept up to 3 filters/week. **Do not store in oil filter boxes.**

NEW!

Now all paper can be mixed together. Magazines and mixed office paper no longer need to be bagged.

Note the year-round collection of phonebooks and paperbacks.

Tie used, clean clothing and other textiles in a clear or marked plastic bag for recycling.

Bundled boxboard has been added, too.



Questions?

Call 99-GREEN (994-7336)

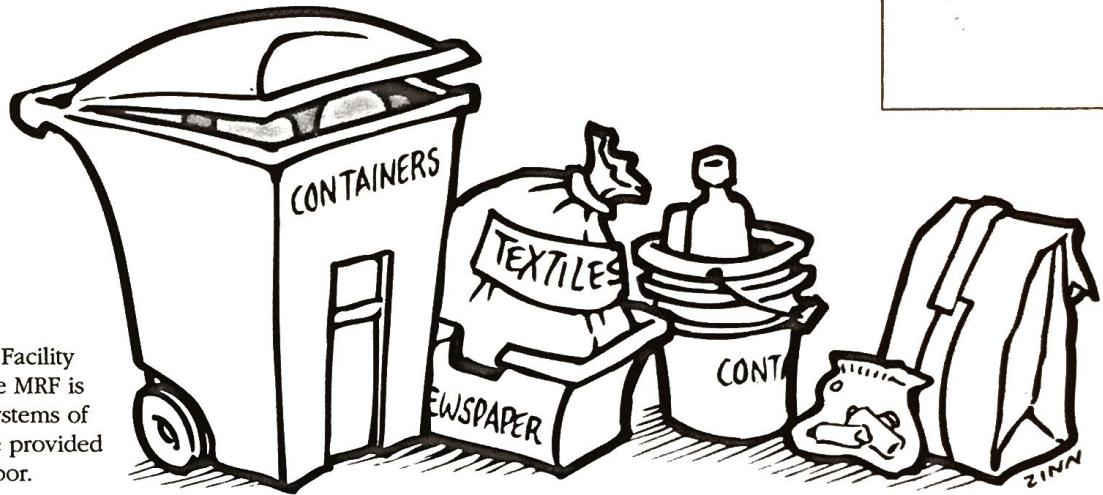
Weekly home recycling collection is provided to every Ann Arbor resident by the City Of Ann Arbor's Solid Waste Department through a contract with Recycle Ann Arbor

Solid Waste Department
City of Ann Arbor
100 North Fifth Avenue
Ann Arbor, Michigan 48107-8647
313/99-GREEN

INTRODUCING CITY OF ANN ARBOR

RECYCLEPLUS

Opened in August 1995, the City of Ann Arbor's new Material Recovery Facility (MRF) accepts the materials described in this RecyclePlus brochure. The MRF is owned by the City of Ann Arbor and operated by Resource Recovery Systems of Centerbrook, CT on behalf of the City. Recycling collection services are provided by the Solid Waste Department through a contract with Recycle Ann Arbor.



Recycling Just got Easier.

NEW RECYCLING CHECKLIST

PAPER & FIBERS

For dry, loose materials:

- ✓ Newspaper
- ✓ Phonebooks & Paperback Books
- ✓ Magazines & Catalogs
- ✓ Mixed Paper & "Junk Mail"
- ✓ Brown Paper Bags
- ✓ Corrugated cardboard

Separated clean, dry FIBERS

- ✓ Textiles (in marked, sealed plastic bag)
- ✓ Boxboard (bundled or bagged)

CONTAINERS

For empty, rinsed materials:

- ✓ Glass & Ceramics No light bulbs.
- ✓ Plastic Bottles #1, #2, #3
- ✓ Cans, Aerosols & Scrap Metal
- Up to 20 pounds; up to 1 foot.
- ✓ Milk Cartons & Juice Boxes

Separated TOXICS

Place outside the curbside recycling bins:

- ✓ Household Batteries
- ✓ Motor Oil
- ✓ Oil Filters

Helpful Phone Numbers:

City of Ann Arbor	
24-Hour Solid Waste, Composting, Recycling Hotline	99-GREEN
Ann Arbor Solid Waste Department	994-2807
Recycle Ann Arbor	
24-Hour Hotline	
Service Line, Drop-Off Station, Commercial	971-7400
Washtenaw County	
Home Toxics Drop-Off Center	971-9676
Division of Public Works	
	971-7356
	994-2398