

SECOND REFRIGERATORS “STEAL” ENERGY DOLLARS!



BECOME AN ENERGY DETECTIVE...

\$25 REWARD

It's **FUN**...Learn about saving energy and recycling.

It's **EASY**...we'll bring our special "paddy wagon" and pick up your energy "thief"!

It's **PROFITABLE**...For each second operating refrigerator "captured", we'll pay a \$25.00 reward. Plus you'll save on energy costs!

HOW YOU CAN JOIN THE REFRIGERATOR DISCOVERY PROGRAM

It's elementary, my dear Watt-son!

In order to prevent the excessive energy consumption of "second" operating refrigerators, the Ecology Center of Ann Arbor is asking residents to help us recover these "Energy Thieves." Any information concerning these refrigerators should be promptly forwarded.

THE CAPTURE

We hope to capture 250 refrigerators this summer on a first-come, first-serve basis. Only the first 250 ELIGIBLE refrigerators can be accepted (two per household limit).

DON'T DELAY!!!

QUALIFY FOR A \$25 REWARD!

YOUR SECOND REFRIGERATOR MUST BE IN USE. Interested? Call an "Energy Detective" at the Ecology Center, 747-7904 (M - F, noon to 4pm). Our Detective will be on hand to take the necessary information and explain the pickup process.

PARTICIPANTS DO NOT NEED TO BE MEMBERS OF THE ECOLOGY CENTER.

The Ecology Center of Ann Arbor reserves the right to determine if a refrigerator qualifies for the REFRIGERATOR RECOVERY PROGRAM if it can be removed safely.

This program is offered in cooperation with the Public Service Commission of the Michigan Department of Commerce.

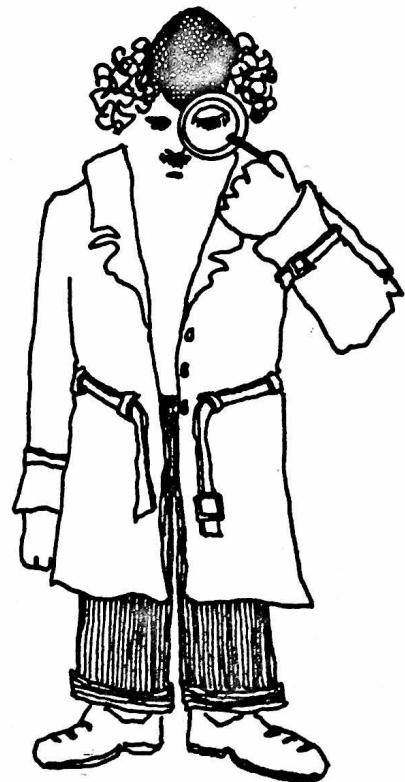


Graphics by: Roth Woods
Printed on recycled paper.

BE ENERGY EFFICIENT



SAVE MONEY BY REDUCING YOUR ELECTRIC BILL



DISCOVER "WATT" WILL REDUCE OVERALL ENERGY CONSUMPTION

CLUES RECYCLE



Recycling converts waste into something that is usable and useful, and also decreases the amount of new raw materials that need to be extracted from the environment.

Recycling also encourages the safe disposal of hazardous wastes. When a refrigerator is sent to a landfill, hazardous wastes like polychlorinated biphenyls (PCB's) and chlorofluorocarbons (CFC's) may not be disposed of properly, causing environmental damage to the ecosystem.

PCB's

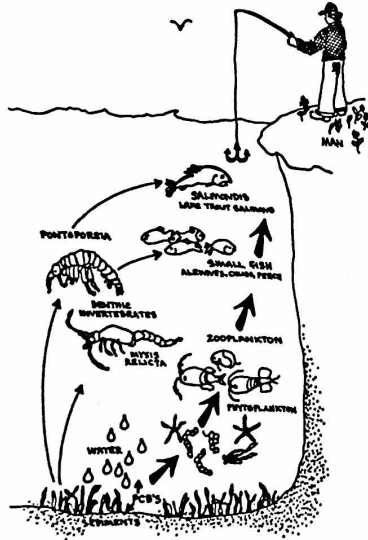
PCB's were used in transformer coils to insulate electrical transformers and capacitors and are persistent in the environment because they are highly resistant to heat and biological degradation. In addition, PCB's are only slightly soluble in water and highly soluble in fats and oils...therefore, animals, including humans, retain PCB's in their body tissues. Toxicologists have found that PCB's can cause fatigue, vomiting, abdominal pain, skin lesions, and stillbirths among humans. PCB's also may cause behavioral and learning disabilities in infants whose mothers eat contaminated fish over several years. In wildlife, harmful effects of PCB's include liver and kidney damage in mammals, eggshell thinning among birds, and reproductive failure in fish.

CFC's

Refrigerants belong to a class of chemicals known as CFC's. CFC's are ozone-depleting chemicals used for numerous purposes, which range from whipped topping stabilizer to pressurized drain cleaner.

When released into the atmosphere, CFC's drift upward into the stratosphere (an upper portion of the atmosphere), where they remain relatively unaffected by ultraviolet rays for decades. In the stratosphere CFC's react chemically with, and destroy, the layer of ozone that shields plants and animals from ultraviolet radiation. Overexposure often causes sunburn, skin cancer, and damage to DNA cells. CFC's are among the greenhouse gases responsible in part for global warming.

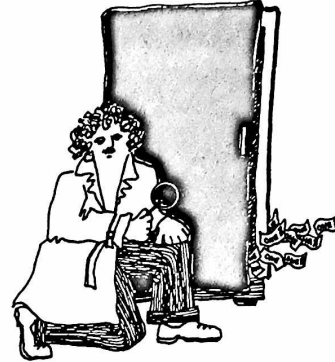
HOW PCB'S PASS THROUGH THE GREAT LAKES FOOD CHAIN



ENERGY AND GREENHOUSE GASES

Another gas included in the greenhouse gases is carbon dioxide (CO₂). Fossil fuels used to produce energy emit CO₂ into the atmosphere. If the current trend of gas emissions continues, it could cause significant climatic changes.

Increasing energy efficiency and practicing energy conservation reduces overall energy use and helps to preserve precious natural resources. SAFE DISPOSAL OF CFC'S AND PCB'S HELPS PROTECT OUR ENVIRONMENT.



ENERGY ADDS UP

YOUR "ENERGY THIEF" IS COSTING YOU MONEY!

Many old, inefficient refrigerators are kept in basements, garages, or recreation rooms for extra refrigeration space. The REFRIGERATOR DISCOVERY PROGRAM demonstrates how much energy can be saved by removing second refrigerators from use.

Refrigerators account for \$8 - \$20 of your monthly residential electricity costs. The average cost to operate your refrigerator annually may be over \$90.

IN THE FIRST YEAR YOUR ENERGY SAVINGS PLUS THE REWARD MAY ADD UP TO

$$\$90 + \$25 = \$115$$

If you turn in your second refrigerator, in five years you could save up to \$475... **MAYBE MORE!**

THE BEST SOURCE OF SAVING MONEY AND PROTECTING NATURAL RESOURCES IS YOU

...BE AN ENERGY "DETECTIVE" BY TAKING ADVANTAGE OF MORE EFFICIENT APPLIANCES AND REDUCING ENERGY USE!

The Ecology Center of Ann Arbor
417 Detroit Street
Ann Arbor, Michigan 48104
(313) 761-3186

BENEFITS TO THE COMMUNITY

The Ecology Center is a nonprofit membership organization that operates energy conservation and recycling services; sponsors educational programs; maintains an environmental library that is open to the public; and is active in local and state environmental issues. The Ecology Center relies on tax-deductible contributions, memberships and volunteers for financial support.

BENEFITS TO MEMBERS

All Ecology Center members receive: A one year subscription to "ECOLOGY REPORTS"; discounts on Ecology Center publications, cards, and merchandise; environmental alerts on critical local issues; and voting rights to elect board members.

Please help support the Ecology Center's programs and services — become a member today!

ECOLOGY CENTER MEMBERSHIP RESPONSE FORM

Name: _____

Address: _____

Phone: _____

YES ! I want to support the Ecology Center of Ann Arbor.

() Sustaining — \$50.00 () Regular — \$25.00

() Supporting — \$15.00 () Senior — \$5.00