

The End of the Line.

Landfills: The Hole Story

After you have reused and recycled everything you can, there is still trash to put out for the trash collector. Your trash collector throws it in his truck and a machine inside the truck smashes the trash so that more can fit into the back.

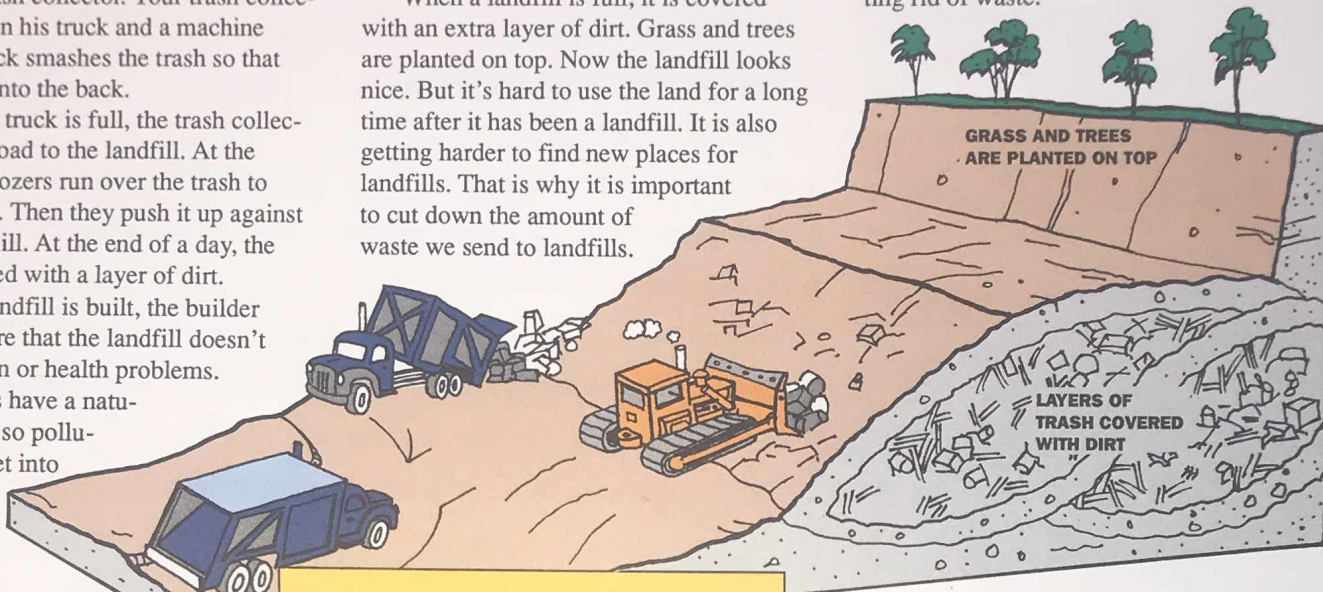
When the truck is full, the trash collector takes his load to the landfill. At the landfill, bulldozers run over the trash to crush it down. Then they push it up against the side of a hill. At the end of a day, the trash is covered with a layer of dirt.

When a landfill is built, the builder must make sure that the landfill doesn't cause pollution or health problems. Some landfills have a natural clay lining so pollution doesn't get into water that is under the ground.

Some landfills don't have clay liners, and have to have special liners built.

When a landfill is full, it is covered with an extra layer of dirt. Grass and trees are planted on top. Now the landfill looks nice. But it's hard to use the land for a long time after it has been a landfill. It is also getting harder to find new places for landfills. That is why it is important to cut down the amount of waste we send to landfills.

When there is less trash to bury, we won't need to use so much valuable land for getting rid of waste.



HELP! Some valuable things are going to the landfill. You can save them by circling the things that can be recycled.

Look for these words:

Jars
Newspaper
Aluminum
Bottles
Tin cans
Scrap paper
Lunch bag
Motor oil
Box

TOYS XUGOJOB
ILUNCHXBAGB
NEWSPAPERRO
XABOTTLESAX
CRAYONSSIBX
ALUMINUMXOR
NMOTORXOILE
SCRAPXPAPER

LITTERING QUESTION



What would you do if you saw a classmate litter?

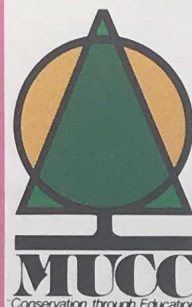
Answers to "Are You WISE?"

Answer Key

1. True. By following the 3 R's, we can reduce the trash we send to the landfill by more than half.
2. False. Yard wastes can be composted to make rich soil.
3. False. More and more plastic is being recycled and made into a building material like lumber.
4. False. Some litter can be recycled or reused.
5. True. There is a lot less litter on the roads and highways since the Bottle Bill was passed.
6. False. To incinerate trash means to burn it.
7. False. Newspaper is easy to recycle.
8. True. We must reduce this amount to save landfill space.
9. True. Nearly 40% of everything we throw away is paper.
10. False. The 3 R's of solid waste are: Reduce, Reuse, Recycle.

Scoring: Give yourself five points for each correct answer.

40-50 You're an Awesome Trash Smasher - Excellent!
30-40 Not bad. You're a WISE Waste Saver. Keep up the good work.
30 or below Read the Trash Can Gazette to learn more about Michigan's solid waste problem.



The WISE Project is coordinated and distributed by Michigan United Conservation Clubs, P.O. Box 30235, Lansing, MI 48909, (517)-371-1041