

## WHAT IS RECYCLE ANN ARBOR?

*Recycle Ann Arbor* is a FREE curbside recycling service. Your neighborhood is part of the 20% of our city that receives this special program. Our city is one of only forty communities in the nation that have this service.

*Recycle Ann Arbor* is a non-profit, community based organization which is run largely by volunteers. Our goal is to establish a city wide curbside recycling program which would employ a professional staff and reduce our residential waste by 25%.

*The City of Ann Arbor* has formally endorsed our efforts and has provided some capital improvement funds toward our goals.

*In our 3½ years of operation*, we have recycled tons of paper, steel, glass, and aluminum. Convenient curbside recycling in our city does:

- reduce pollution
- save energy
- fight inflation
- create jobs
- create a model for cities all over the country.

*Recycle Ann Arbor* will pick up your paper, glass, and metal that you leave at your curbside once a month. All you must do is place properly prepared and separated recyclables at your curb on collection days.

*Your recyclables* will be picked up by trucks marked "Recycle Ann Arbor". We ask that you please label your paper bundles "For Recycle Ann Arbor".

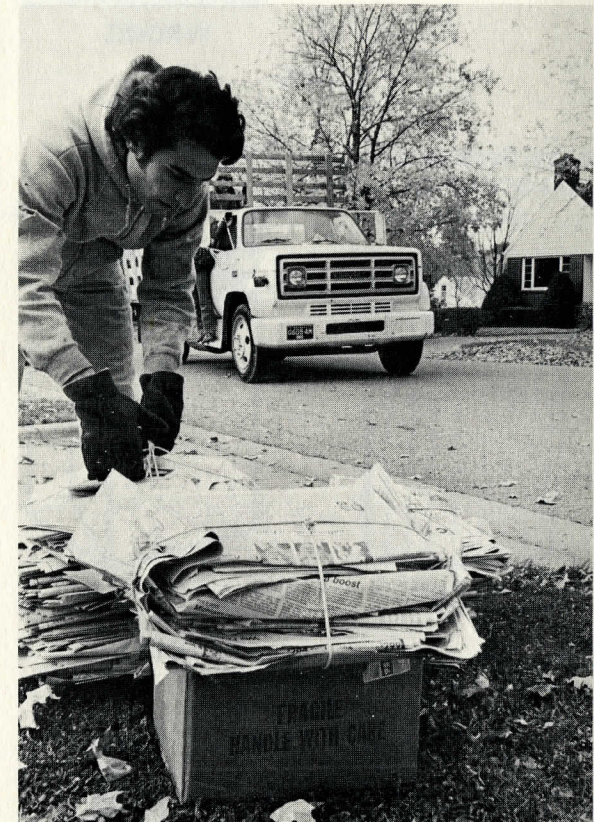
If you have questions or are unable to carry your recyclables to the curbside, call our office at 665-6398.

## RECYCLING TAKES PEOPLE

Each year, thousands of volunteer hours are needed to keep the trucks rolling past your house. Our recyclers are urged to help by joining as a member of a "Quarter Crew". A Quarter Crew member volunteers to work on the collection trucks in his or her neighborhood for one half of a Saturday once every quarter-year. By pledging as a Quarter Crew member or by volunteering other skills, you will become a vital part of Recycle Ann Arbor. Please send us the enclosed return slip or give us a call to find out more about Quarter Crew scheduling.



## Ann Arbor's own curbside recycling service



**665-6398**



strong, firmly tied string

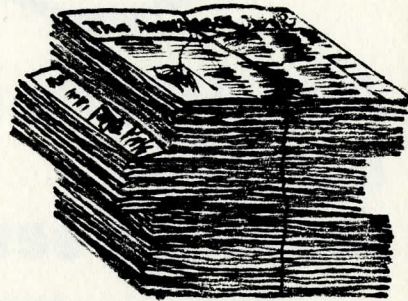
PAPER



6-8"

RIGHT

weak, poorly tied string

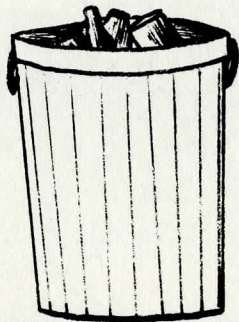


too heavy

WRONG

GLASS

strong, durable container  
metal ring removed  
all one color

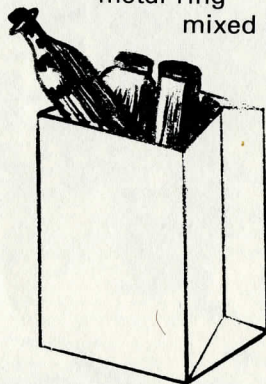


RIGHT

paper bag

metal ring

mixed colors



STEEL

clean, flattened



RIGHT



WRONG

## PREPARATION

If you can take a few minutes to follow these guidelines it will make things much easier for us:

### PAPER

- sort newspaper, cardboard (includes grocery bags), telephone books, white office paper.
- bundle each separately with string, twine, or packed in paper bags.
- remove staples from office paper.

### GLASS CONTAINERS (no plate glass)

- rinse containers and remove all metal attached, including caps, rings, and foil.
- please sort glass by color.

### STEEL

- will stick to a magnet.
- rinse cans and remove labels; flatten. (includes bi-metal cans.)

### ALUMINUM

- cans, foil, lawn furniture, window/door frames, pie tins, etc.
- flatten cans; remove rivets and screws from furniture and frames.
- reduce to manageable size (nothing over 3 feet).

### OTHER METALS

- old motors, car batteries, wire, and other miscellaneous items and plumbing fixtures which contain brass, copper, lead, or stainless steel.
- store with your aluminum for collection.
- nothing over 3 feet.

### REMEMBER

- materials must be placed at your driveway curb by 8 am on the collection day.
- put glass, steel, and aluminum in separate containers.
- use durable containers (heavy cardboard boxes, metal/plastic trashcans); your containers will be left at curbside for reuse.

Recycle Ann Arbor only collects materials listed above. If you have questions about items not listed here, call the Ecology Center at 761-3186.

## RECYCLING DATES TO REMEMBER

area south of Liberty Street  
bounded by Main and Stadium.

area north of Liberty Street  
bounded by Main, Miller,  
Stadium and Maple.

1982

<b>January</b> S M T W T F S 1 2 3 4 5 6 7 8 9 10 11 12 13 14 15 16 17 18 19 20 21 22 23 24 25 26 27 28 29 30 31	<b>February</b> S M T W T F S 1 2 3 4 5 6 7 8 9 10 11 12 13 14 15 16 17 18 19 20 21 22 23 24 25 26 27 28	<b>March</b> S M T W T F S 1 2 3 4 5 6 7 8 9 10 11 12 13 14 15 16 17 18 19 20 21 22 23 24 25 26 27 28 29 30 31
<b>April</b> S M T W T F S 1 2 3 4 5 6 7 8 9 10 11 12 13 14 15 16 17 18 19 20 21 22 23 24 25 26 27 28 29 30	<b>May</b> S M T W T F S 1 2 3 4 5 6 7 8 9 10 11 12 13 14 15 16 17 18 19 20 21 22 23 24 25 26 27 28 29 30 31	<b>June</b> S M T W T F S 1 2 3 4 5 6 7 8 9 10 11 12 13 14 15 16 17 18 19 20 21 22 23 24 25 26 27 28 29 30
<b>July</b> S M T W T F S 1 2 3 4 5 6 7 8 9 10 11 12 13 14 15 16 17 18 19 20 21 22 23 24 25 26 27 28 29 30 31	<b>August</b> S M T W T F S 1 2 3 4 5 6 7 8 9 10 11 12 13 14 15 16 17 18 19 20 21 22 23 24 25 26 27 28 29 30 31	<b>September</b> S M T W T F S 1 2 3 4 5 6 7 8 9 10 11 12 13 14 15 16 17 18 19 20 21 22 23 24 25 26 27 28 29 30
<b>October</b> S M T W T F S 1 2 3 4 5 6 7 8 9 10 11 12 13 14 15 16 17 18 19 20 21 22 23 24 25 26 27 28 29 30 31	<b>November</b> S M T W T F S 1 2 3 4 5 6 7 8 9 10 11 12 13 14 15 16 17 18 19 20 21 22 23 24 25 26 27 28 29 30	<b>December</b> S M T W T F S 1 2 3 4 5 6 7 8 9 10 11 12 13 14 15 16 17 18 19 20 21 22 23 24 25 26 27 28 29 30 31

In the event of heavy snow or extreme cold, collection will take place the following Saturday. Listen to WPAG-10.50 AM and 107 FM or call our office.