

WHY RECYCLE?

RECYCLING SAVES TAX DOLLARS.

According to estimates from the city's solid waste department, the city saves a minimum of \$6.50 in landfill costs for each ton we recycle. Using their estimate of 13,607 tons of available recyclables within the city of Ann Arbor, recycling has the potential to save \$88,400 per year.

RECYCLING SAVES LAND.

A successful recycling program in Ann Arbor prolongs the life of our landfill. The Recycle Ann Arbor program could save one acre of land per year.

RECYCLING SAVES ENERGY.

Less energy is required to produce products made with recycled materials. Recycling all of Ann Arbor's available materials could save 21,405 barrels of oil in one year.

RECYCLING REDUCES POLLUTION.

Because less energy and raw materials are required in production, the manufacture of recycled materials creates less pollution. For example, recycled steel manufacturing produces 86% less air pollution and 75% less water pollution than manufacturing processes using new materials.

RECYCLING CONSERVES RESOURCES.

The more we recycle, the less we need to tap into our natural resources: timber (paper), sand (glass), oil, mineral resources and fresh water.

RECYCLING IS GOOD FOR OUR ECONOMY.

New industries which use recycled materials can help put people back to work. Recycling creates more jobs than any other waste management technique. Saving energy and conserving resources by recycling helps keep our dollars within the community.



Louis D. Belcher
Mayor

CITY OF ANN ARBOR MICHIGAN

100 North Fifth Avenue, P.O. Box 8647, Ann Arbor, Michigan 48107
Phone (313) - 994-2766

Office of the Mayor
Ann Arbor, Michigan

Dear Ann Arbor Resident:

These are exciting times for the citizens of Ann Arbor! Recycle Ann Arbor's curbside recycling program is expanding to service the entire residential community, providing everyone with the opportunity to conserve resources, save energy, avoid pollution, and extend the life of our landfill.

Preparing recycleables is easy, convenient, and takes up little space in the home. Recycling is an activity that strengthens our community and provides a sense of personal pride. It is an idea whose time has come, and as mayor of this All-American city, I challenge you to join thousands of your fellow citizens in supporting this common sense approach to solid waste management.

Sincerely,

Louis D. Belcher

THE ECOLOGY CENTER OF ANN ARBOR

The Ecology Center of Ann Arbor is a non-profit educational and service organization supported by over 1500 members. Recycle Ann Arbor is a program of the Ecology Center. Founded in 1970, the Ecology Center works to protect and improve the quality of the environment in Ann Arbor and Washtenaw County. Other Ecology Center programs include:

ENERGY CONSERVATION. The Center runs workshops and home visits to show clients practical low-cost weatherization techniques. Home Energy Works clients have saved as much as 25% on their heating bill as a result of participation in our program.

ISSUES WORK. The Center has participated, both locally and across the state, in public policy formation and planning in many areas, including clean air and water, hazardous waste management and disposal, solid waste disposal alternatives, land use and energy.

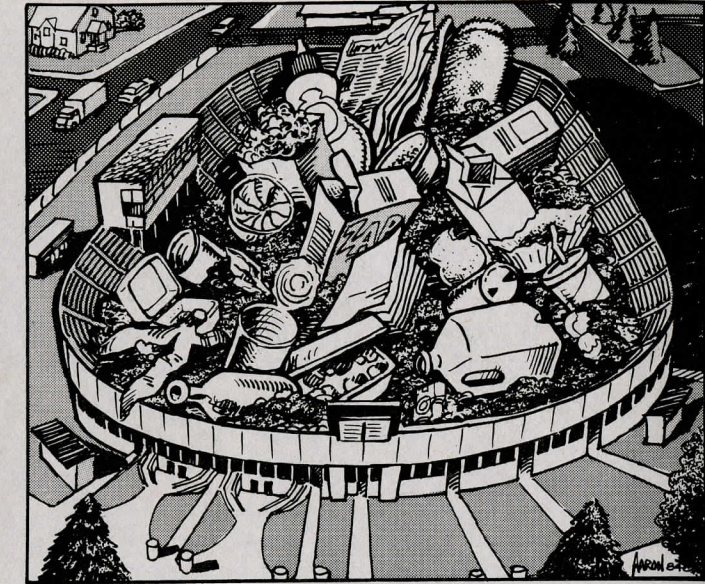
ENVIRONMENTAL EDUCATION. The Center provides presentations to schools and organizations on a variety of topics, ranging from recycling to household toxics. A monthly newsletter, *Ecology Reports*, provides information on environmental topics.

RESOURCES AND REFERRALS. The Center's public library holds more than 2,000 circulating volumes, supplemented by a reference section, periodicals and extensive files. The Center also provides information referrals on a wide range of common environmental questions.

FOR MORE INFORMATION on becoming a volunteer for the Center, becoming a member, or for information on other Ecology Center activities, **call us at 767-3186**, or visit our office and library at 417 Detroit St. in Ann Arbor.

printed on 100% recycled paper

Ann Arbor throws away enough trash in six months to fill the University of Michigan football stadium.



Now you can break the throw away habit.

RECYCLE ANN ARBOR
Curbside Recycling Service

HOW ARE MATERIALS RECYCLED?

1. PAPER

Recycle Ann Arbor bales and then sells the paper it collects to a paper dealer. The dealer in turn sells some of the paper to mills where it is processed into cellulose insulation. The paper mills also turn recycled paper into boxes, new newsprint and tissue paper.

2. GLASS

Recycle Ann Arbor sells the glass it collects to a beverage container manufacturer. The recycled glass is combined with sand, soda, ash and lime to make new glass. The labels on the recycled bottles burn off during this process.

3. MOTOR OIL

Many waste oil haulers dispose of the oil they collect by selling it to road oiling crews or to companies interested in burning waste oil. Both of these options can present serious environmental problems. Recycle Ann Arbor sells its oil to a refinery where cleaning and processing turn used oil into lubricating oil.

4. TIN CANS

Food cans have a thin coating of tin to prevent rusting. Tin is a valuable natural resource which our country must import. So cans are first sent to a "de-tinning" plant where the tin is removed from the steel through a chemical process. Paper labels are a serious contaminant in this process. Once the cans are de-tinned, the steel from the cans is sold as scrap steel, melted down and turned into new steel products.

PREPARATION

Materials must be on your driveway curb by 8:00 a.m.

Place materials 8 to 10 feet away from regular trash and label "For Recycle Ann Arbor."

Please use durable containers: cardboard boxes, small trash cans or milk crates.

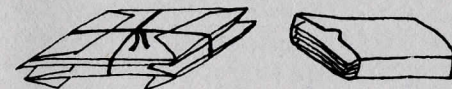
NOTE: If you live in an area where there is a choice between an alley and a street, please place your recycleables on the street.

NEWSPAPERS



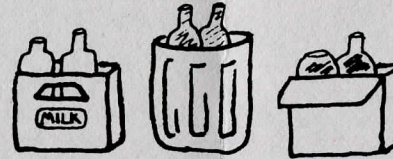
- Please bundle tightly with strong string.
- Please make bundles 6 to 8 inches thick. We are concerned about possible back injuries to our workers.
- Please, no magazines, white paper, grocery bags, advertising circulars or junk mail in with newspapers.

CARDBOARD AND BAGS



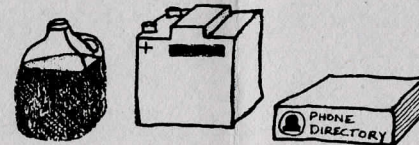
- Make bundles no more than 3 feet long by 2 feet wide by 1 foot high in size. Larger sizes are difficult for our workers to manage.
- Please bundle grey cardboard (like cereal boxes and tissue boxes) separately.
- We cannot accept waxed or aluminized cardboard: milk cartons and butter boxes are examples.
- bundle or bag grocery bags.

GLASS CONTAINERS



- Separate glass jars by color: clear, green and brown.
- All metal should be removed: steel lids can go in with steel cans, aluminum caps can go in with aluminum.
- Only food and beverage containers: no window glass, drinking glasses, mirrors or pyrex.

OTHER



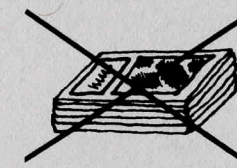
- Put used motor oil in tightly sealed, plastic containers.
- Put used car batteries on the curb.
- Put old phone books out away from other paper.

METAL



- Rinse cans, remove paper, remove ends and flatten *completely*.
- Steel and aluminum go in separate containers: steel attracts a magnet, aluminum will not.
- Aluminum foil and trays can go in with aluminum cans.
- We cannot accept bi-metal cans -- cans with aluminum tops and steel bodies. Test with a magnet.

NO MAGAZINES!



- We cannot accept magazines for recycling.

SPECIAL SERVICES:

- Recycle Ann Arbor provides special pickups for senior and handicapped citizens. Call 665-6398.
- Condominiums and apartments require special attention. If you are interested in helping to organize your complex for recycling, please call 665-6398.

WEATHER TIPS:

RAINY WEATHER

If it rains on your collection day, make sure that your recyclables are covered with a plastic bag, a tarp, or an old shower curtain. Also, use sturdy containers for glass and cans.

COLD WEATHER

Recycle Ann Arbor collection may be delayed due to extreme cold (below 5 degrees at 8:00 a.m. on the pickup day). Listen to radio stations WPAG or WAAM for snow days.

VOLUNTEER!

Recycle Ann Arbor depends on volunteers to keep operations running smoothly. Over 200 volunteers each year work with our curbside and drop-off recycling programs.

Block coordinators distribute this pamphlet and monthly reminders to their neighbors.

Crew members help operate the recycling trucks during the week and on Saturdays.

Recycling station volunteers greet the public and unload recyclables at the station.

RECYCLING STATION

2050 South Industrial Highway
9:30 to 4:30 Fridays and Saturdays